

BIOSTIMULANT PRODUCT RANGE & USAGE GUIDE



FERTILEADER®



FERTIACTYL®



Timac AGRO
United Kingdom



Timac AGRO

United Kingdom

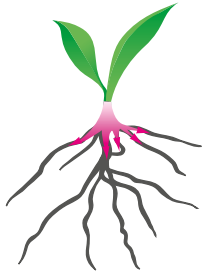


BIOSTIMULANT RANGE OVERVIEW

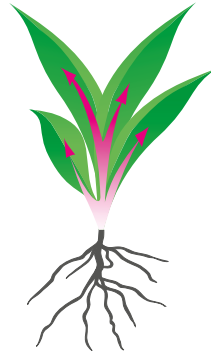
TIMAC AGRO HAVE TWO SPECIFIC RANGES OF PRODUCTS

 **FERTIACTYL®**

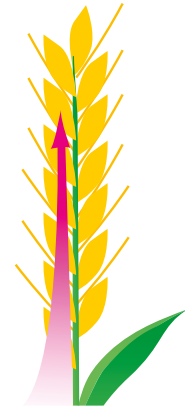
 **FERTILEADER®**



Establishment



Vegetative growth



Finishing



FERTIACTYL

FERTILEADER

BIOSTIMULANT USAGE PROGRAMMES

FERTIACTYL®

For application in early stage of crop establishment

FERTIACTYL biostimulant is an exclusively patented product containing FERTIACTYL complex, N° 945000107 which is based on seaweed extracts and organic acids that promote root development and crop establishment.



FERTILEADER®

For application during the main vegetative growth stages of the crop

FERTILEADER biostimulants contain specific seaweed extracts and are formulated and patented as the SEACTIV complex N°EP98400150.3. FERTILEADER products also provide a range of mineral nutrients to promote the overall nutritional balance within the growing crop.



Benefits of applying FERTICATYL® and FERTILEADER® as part of a Crop Husbandry Programme:

- Increases root establishment and development
- Higher water and nutrient uptake, transport and movement within the crop
- Enhances photosynthesis capacity giving more energy to grow
- Increases resistance to stresses and reduces the negative impacts of weather or chemical sprays
- Enhances the overall nutrient programme for the crop



TIMAC AGRO BIOSTIMULANT PRODUCT RANGE

TIMAC AGRO BIOSTIMULANT PRODUCT RANGE											
Product Name	N% %	P (P ₂ O ₅) %	K (K ₂ O) %	Mg (MgO) %	Ca (CaO) %	Mn %	B %	Zn %	Cu %	Fe %	Mo %
FERTIACTYL RANGE											
FERTIACTYL STARTER	13	5	8								
FERTILEADER RANGE											
FERTILEADER VITAL	9	5	4			0.1	0.05	0.05	0.02	0.02	0.01
FERTILEADER KALEO	4	6	9			0.1	0.05	0.05	0.02	0.02	0.01
FERTILEADER MAGNUM	7			9							
FERTILEADER MAGICAL				4	12						
FERTILEADER GOLD							5.7				0.35

FERTIACTYL®

Primarily used at the emergence of many combinable and forage crops. Particularly suitable for: Potatoes, maize, transplanted vegetables, oilseed rape, and cereals

- Encourages good early crop establishment and root development of sown crops
- More intense, longer photosynthesis which allows better nutrient efficiency
- Increased resistance and nutrient uptake in periods of plant stress
- Helps to overcome environmental stresses
- Increased rooting, actively promotes uptake and transport of minerals by increasing root mass
- Protects nutrients from loss in blocking or leaching soils and releases nutrients from the soil



control

Fertiactyl

LIQUID ROOT BIOSTIMULANT

FERTILEADER® Range

Fertileader products contain a seaweed-based compound with added mineral elements which:

- Increases plant resilience to stress caused by weather and pesticide applications
- Gives more effective uptake of nutrients
- Increases photosynthesis and overall plant growth to encourage yield and quality
- Supplies a range of trace elements



FERTILEADER® Vital

NPK solution with micro-nutrients

- A general purpose foliar biostimulant formulated for use in many crops including potatoes, cereals, root veg, leafy veg and maize.



FERTILEADER® Kaleo

NPK solution with micro-nutrients

- A general purpose foliar biostimulant for use in potatoes, salads and horticultural cropping.



FERTILEADER® Magnum

Nitrogen and Magnesium solution

- A foliar biostimulant for use in grasslands, turf, amenity grass, potatoes and viticulture.



FERTILEADER® Magical

Calcium chloride solution

- A foliar biostimulant formulation for crops requiring some supplementary magnesium and calcium, in particular cereals, potatoes, carrots/parsnips, leafy veg, maize and apples.



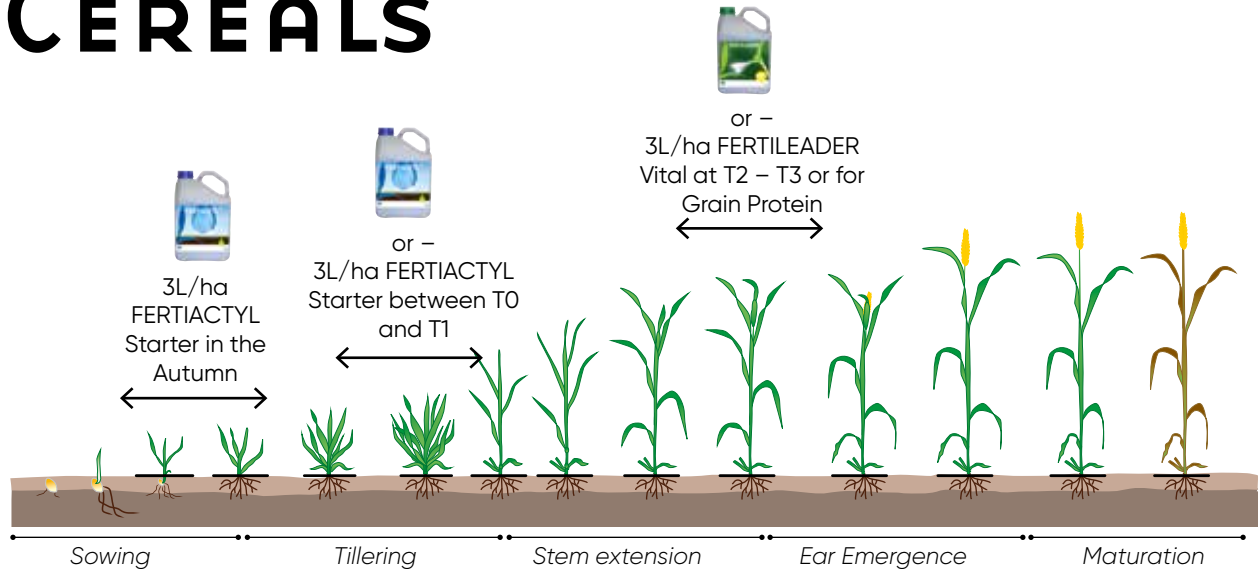
FERTILEADER® Gold

Fluid mixture of boron and molybdenum micro-nutrients

- A general purpose foliar biostimulant formulated for use in many crops including oilseed rape, beets, brassicas, potatoes and cereals.



CEREALS



APPLICATION

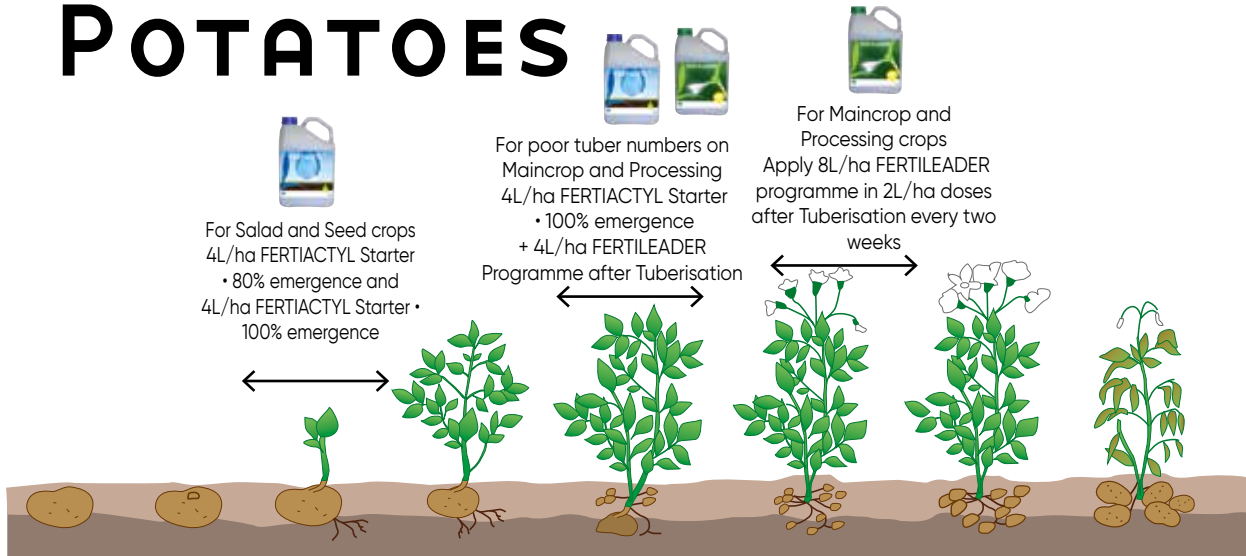
- Apply 3L/ha of FERTIACTYL Starter at 3-4 leaf stage and/or, at T0 – T1
- For Malting barley - apply FERTILEADER Vital at a rate of 3L/ha T0-T1 Stage (at end of tillering / start of stem extension) and/or,
- For Cereals - apply FERTILEADER Vital at a rate of 3L/ha at T2 stage (Flag Leaf Stage) Or at GS75 to increase grain protein

Disclaimer: Check compatibility with other sprays using Pre-mixing Bucket Test

BENEFITS

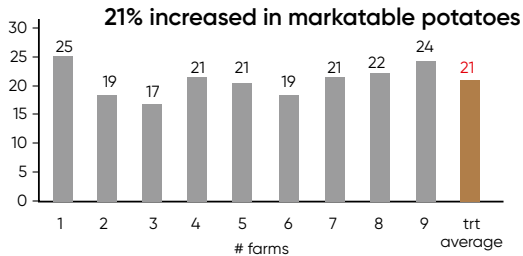
- Increased plant tillering.
- Improved root mass for nutrient uptake.
- Increased movement of nutrient throughout the plant.
- Reduced crop stresses due to weather and chemical sprays.
- Improves the uniformity and strength of tillers.
- Increased yield and quality.

POTATOES



APPLICATION

- FERTIACYL Starter applied at a rate of 8L/Ha at 80 - 100% emergence.
- FERTIACYL Starter and FERTILEADER applied in combination to encourage increased tuber numbers on processing crops.
- FERTILEADER applied at a rate of 8L/Ha, 2L/Ha every 14 days following previous application.

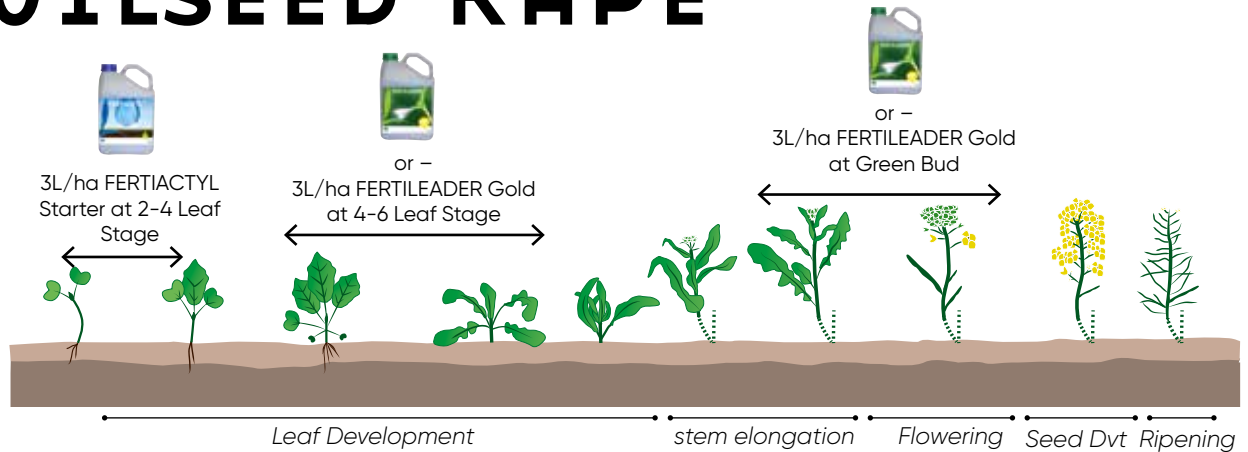


BENEFITS

- The application of a biostimulant programme resulted in marketable potato (45-80mm) yields increasing by an average of 21% across 9 different farms. The average yield increase was 3.7 tons per acre.



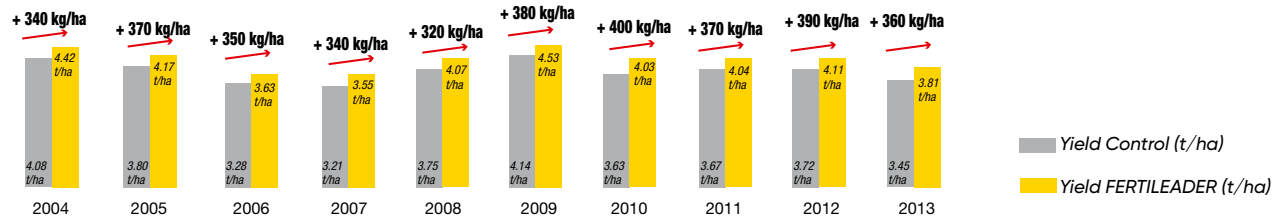
OILSEED RAPE



APPLICATION

- Apply 3L/ha FERTIACTYL Starter at 2-4 Leaf Stage
- Or Apply 3L/ha FERTILEADER Gold at 4-6 Leaf Stage or 3L/ha FERTILEADER Gold at Green Bud

Using Fertileader Gold increased Oil Seed Rape by 8%

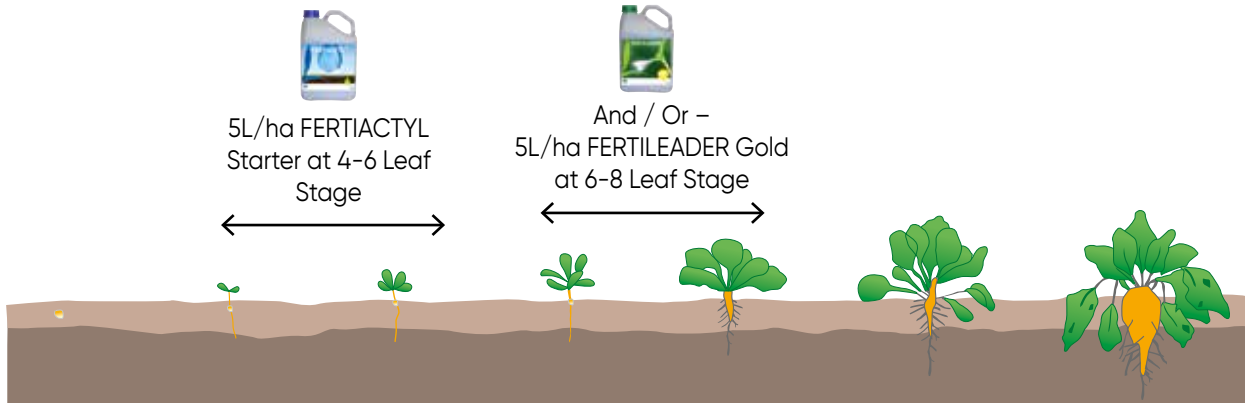


FERTIACTYL STARTER BENEFITS

- Stimulates plant tap root development.
- Increased plant nutrient uptake.
- Increased nutrient reserves.
- Promotes higher sugar concentration after winter for plant Photosynthesis.

Disclaimer: Check compatibility with other sprays using Pre-mixing Bucket Test

SUGAR & FODDER BEET



APPLICATION

- Apply 5L/ha FERTIACTYL Starter at 4-6 Leaf Stage
- And / Or apply 5L/ha FERTILEADER Gold at 6-8 Leaf Stage
- Can be applied with Herbicide.

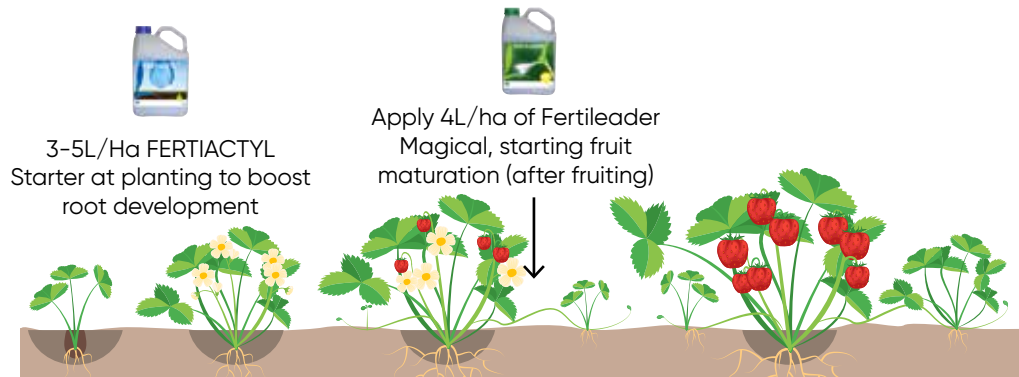
FERTIACTYL STARTER BENEFITS

- Reduces stresses due to weather or chemicals.
- Promotes root development.
- Improve nutrient uptakes.
- Promotes more uniform beet size.

FERTILEADER GOLD OR SILVER BENEFITS

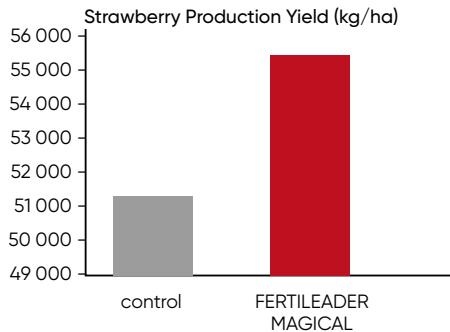
- Reduce Herbicide stresses to growing crop.
- Source of Boron to reduce heart rot.
- Keeps growth development in periods of drought or wet weather.

STRAWBERRIES



APPLICATION

- 3-5L/Ha FERTIACTYL Starter at planting to boost root development and reduce plant stress
- 4L/ha Fertileader Magical, starting fruit maturation (after fruiting).



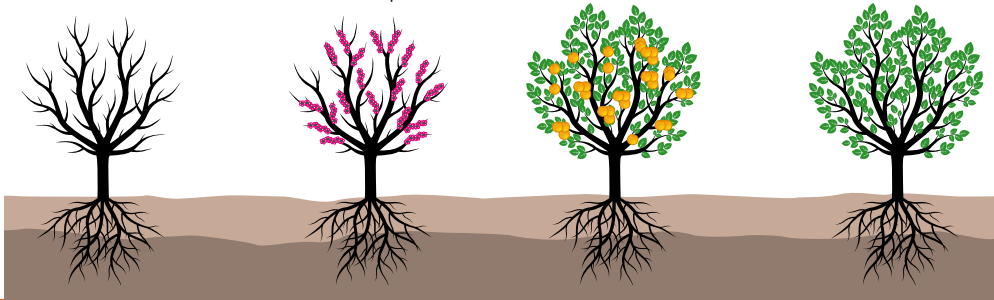
BENEFITS

- Stimulates the production of sugars.
- Reinforces plant photosynthesis.
- Reduces risk of bruising
- Increase strawberry yield by 8%

Disclaimer: Check compatibility with other sprays using Pre-mixing Bucket Test

APPLE

1. 4.5L/ha FERTILEADER Vital following flowering/ petal fall	2. 14 days later 4.5L/ha FERTILEADER Magical	3. 14 days later 4.5L/ha FERTILEADER Vital	4. 14 days later 4.5L/ha FERTILEADER Magical	5. 14 days later 4.5L/ha FERTILEADER Vital	6. 14 days later 4.5L/ha FERTILEADER Magical
---	---	---	---	---	---



FERTILEADER RANGE BENEFITS

- Use FERTILEADER Biostimulants on apple trees to help overcome stress related 'stoppages' to any stage of growth and development.
- FERTILEADER also aids plant activity increasing sugar production and general plant energy for growth and development.
- Senescence of leaves is also delayed allowing for greater capacity for fruit filling impacting on final apple size and yield.
- Mineral uptake and transport in the plant is increased.
- Product choices are Fertileader Vital and Magical.

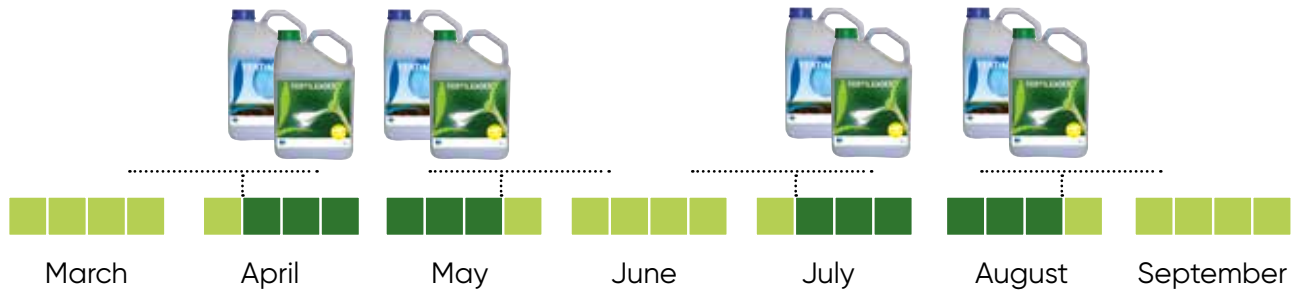
NB. They should not be used in place of foliar feed mineral sprays, but can be used together with them.

Disclaimer: Check compatibility with other sprays using Pre-mixing Bucket Test



TURF & AMENITY GRASS

Growing Season - 5L/ha of FERTIACTYL Starter and 5L/ha of FERTILEADER Magnum, mixed together



APPLICATION PROGRAMME

- Apply 5L/ha Ferticatyl Starter plus, 5l/ha FERTILEADER Magnum.
- Apply every 4-6 weeks during growing season.
- Can be applied with chemical sprays.

TARGET AREAS

- Golf Courses.
- Turf Growers Pitches.

BENEFITS

- Increase root development.
- Reduce grass stresses.
- Promote greening.
- Increase nutrient uptake.
- Reduced sod pull.

Disclaimer: Check compatibility with other sprays using Pre-mixing Bucket Test

GRASSLAND

Growing Season - Apply 4-5L /ha of FERTILEADER Magnum with or without a Herbicide



Silage Situation - Apply 4 - 5L/ha of FERTILEADER Magnum 3-5 weeks before cutting.
May be applied on its own or with a Herbicide application

RESULT

The application of FERTILEADER Magnum to grass silage increased crude protein content by 32 g per kg of DM and grass silage yield by 0.22t DM/ha.

FERTILEADER RANGE BENEFITS

- Increased grass sugars.
- Improved grass yield and quality.
- Reduced stress caused by herbicide.
- Increased plant activity for nutrient use.
- Improve palatability.



Timac AGRO
United Kingdom

NOTES



THINK DIFFERENT...
FARM BETTER



Timac AGRO
United Kingdom

www.uk.timacagro.com